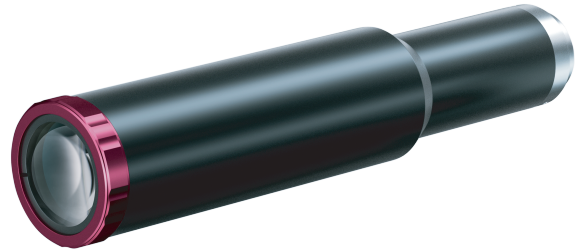


# DTCA121-5

## High Performance Industrial Lens

- DTCA series lenses are designed specially for compatibility with large sensor.
- Support newest developments in machine vision field: 24K line scan camera and 150Mp area scan camera.
- Extreme imaging aperture, extraordinary aberration correction, diffraction limited imaging resolution.
- Big aperture, good telecentricity, near zero distortion, big depth for high quality imaging.



Optical Specifications	
Magnification (x)	4.00
Object Field of View (Φmm)	5.0
Working Distance (mm)	45±1
Max Sensor Size (Φmm)	20(1.2")
Best Aperture (F/#)	11.7
Telecentricity typical (max) (deg)	<0.1
Distortion typical (max) (%)	<0.08
MTF30 (lp/mm)	>73
Depth of Field (mm)	0.06
Length of I/O (mm)	243

Field of View (mm × mm)	
1.2" IMX530/540 (14.6x12.6)	3.65x3.15

Mechanical Specifications	
Mount	C
Length(mm)	180.5
Weight(kg)	/
Coaxial Light	No
Iris	No

### Notes:

1. Depth of Field is calculated value, this value could be used for imaging test, but to get sharp image in application, half of calculated value is suggested.

2. Length of I/O = WD + Length + Back Focal Length.

