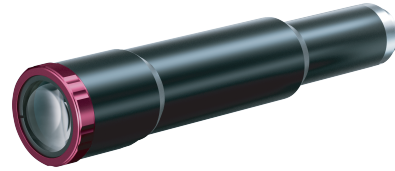


DTCA121-10

High Performance industrial Lens

- DTCA series lenses are designed specially for compatibility with large sensor.
- Support newest developments in machine vision field: 24K line scan camera and 150Mp area scan camera.
- Extreme imaging aperture, extraordinary aberration correction, diffraction limited imaging resolution.
- Big aperture, good telecentricity, near zero distortion, big depth for high quality imaging.



Optical Specifications	
Magnification (x)	2.00
Object Field of View (Φmm)	10
Working Distance (mm)	63±1
Max Sensor Size (Φmm)	20(1.2")
Best Aperture (F/#)	6.6
Telecentricity typical (max) (deg)	<0.1
Distortion typical (max) (%)	<0.2
MTF30 (lp/mm)	142
Depth of Field (mm)	±0.07@F6.6
Length of I/O (mm)	260±1

Field of View (mm × mm)	
1.2" IMX530/540 (14.6x12.6)	7.3x6.3

Mechanical Specifications	
Mount	C
Length(mm)	179
Weight(kg)	/
Coaxial Light	No
Iris	No

Notes:

1. Depth of Field is calculated value, this value could be used for imaging test, but to get sharp image in application, half of calculated value is suggested.

2. Length of I/O = WD + Length + Back Focal Length.

